

## PSUSD ETIS Technology Depot Schedule

School Site	Day	Date Range	Time	Location
Cathedral City High	Mondays	1, 8, 15, <b>22</b> , 29	8:30AM to 10:30AM	Student Parking Lot
Palm Springs High	Wednesdays	3, 10, <b>17</b> , 24, 31	8:30AM to 10:30AM	Family Engagement Parking Lot
Desert Hot Springs High	Fridays	5, <b>12</b> , 19, 26	8:30AM to 10:30AM	Upper Parking Lot

**NOTE:** On **3/12**, **3/17** and **3/22** the Tech Depot dates will be held in the evening, those evening times are from 4:30 to 6:30.

Parents and students who need support for damaged student devices and associated accessories such as cables and chargers, you have two support options.

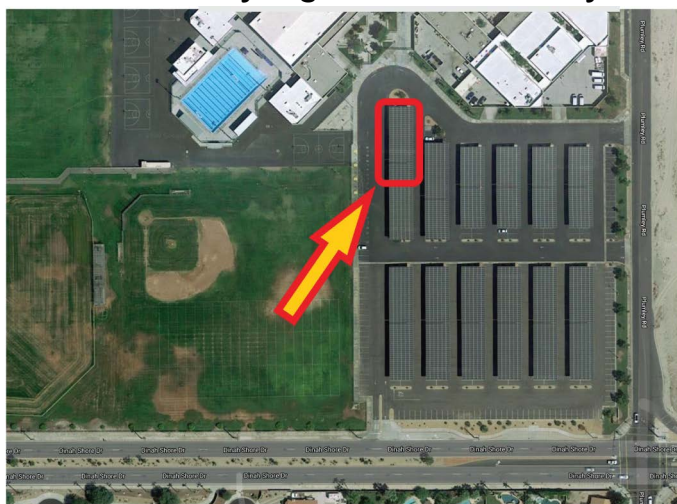
1. Contact your child's school to make an appointment for technology support.
2. Visit one of the Tech Depots for technology support.
3. **Note:** HotSpots will only be assigned by your school's principal or designated employee.
4. **Due to current Covid safety precautions PSUSD will continue to hold Tech Depots during the month of February.**

For additional Parent / Student technology support for Chromebooks, iPads and Hotspots please email:

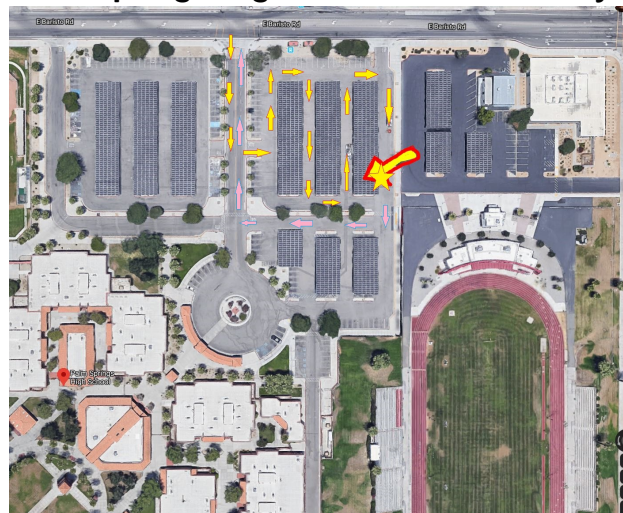
- TK-5 Parents/Students Support email: [ESHelp@psusd.us](mailto:ESHelp@psusd.us)
- 6-8<sup>th</sup> Parents/Students Support email: [MSHelp@psusd.us](mailto:MSHelp@psusd.us)
- 9-12<sup>th</sup> Parents/Students Support email: [HSHelp@psusd.us](mailto:HSHelp@psusd.us)

**Students and parents, please contact your school if you do not have internet at home.**

**Cathedral City High School - Mondays**



**Palm Springs High School - Wednesdays**



**Desert Hot Springs High School - Fridays**

